

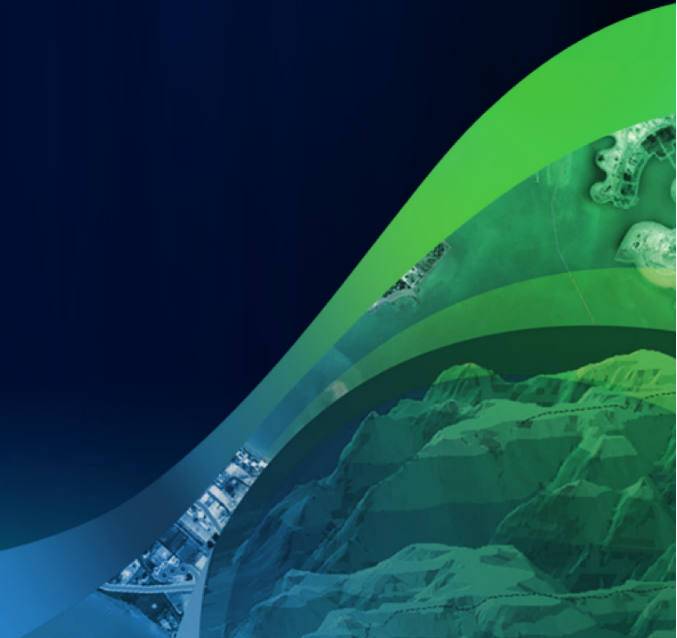


Designing Healthy Communities with Maps

Matthew Baker

ESRI, Redlands, California

matt_baker@esri.com



Presentation Overview

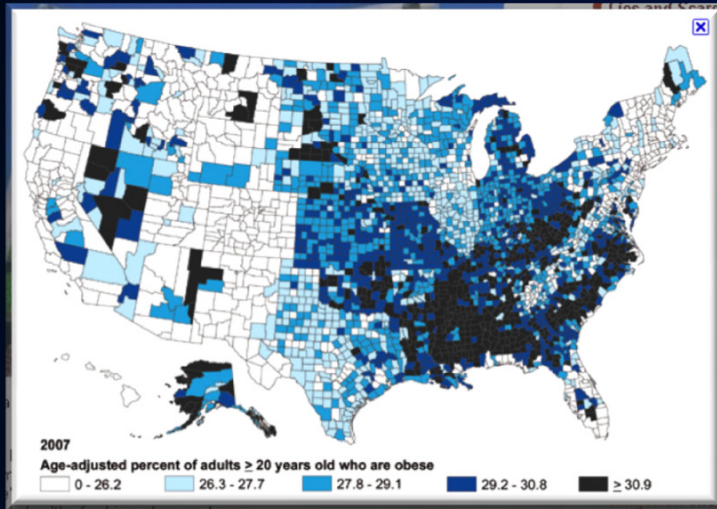
- **Mapping Food Deserts**
- **Mapping Park Access**
- **Safe Routes to School Planning**
 - **Data collection**
 - **Planning**
 - **Communication**



Mapping Food Deserts

Comparing Current Applications and Analysis

Small Scale Examples



GOOD FOOD
NEWS & FEATURES | INFOGRAPHICS | SLIDESHOWS | VIDEOS | PROJECTS

Food Deserts: An Interactive Map of the Places in America Farthest From a Supermarket

January 3, 2011 - 9:00 am PST | 210 responses | 210 recommendations

MORGAN CLENDANIEL
Deputy Editor

SHARE THIS
f 85
t 145

No Car and No Supermarket Store Within a Mile

There are 2.3 million people living in America with no car and without a supermarket within a one-mile radius. People living in these "food deserts" are often obese and unhealthy because they're stuck eating junk food from the convenience store. Data has been provided by interactive map

Want to donate to Grist? Click here or text GOGREEN to 85944

grist
A BEACON IN THE SMOG

ADVERTISEMENT
Hunt for the effects of warming and you could w carbon-neutral trip to

CLIMATE & ENERGY | FOOD | CITIES | LIVING | BIZ & TECHNO

SHOPPING CART

New tool maps and grades 'food deserts' to lure supermarkets 2

BY BONNIE AZAB POWELL
21 OCT 2010 5:19 PM

Like | Tweet 41

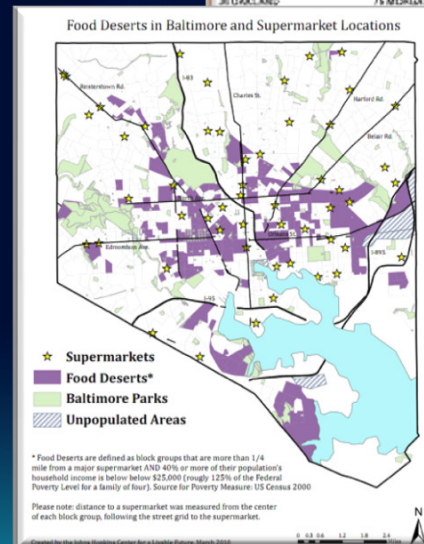
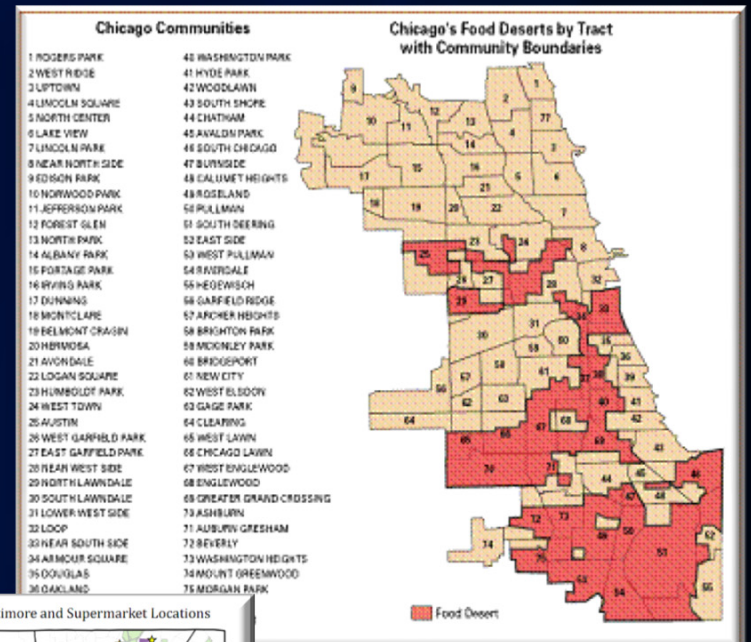
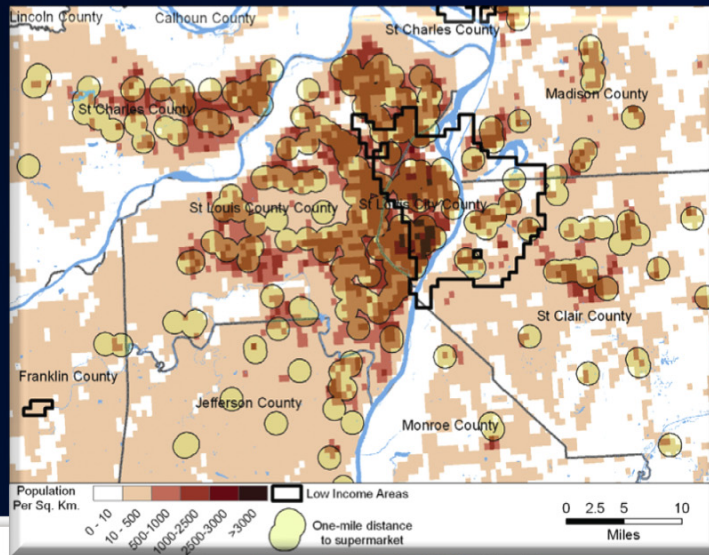
Legend
Insufficient Data
LAA
Not LAA
Shaded by: Block Group
Source: TRF
Clear Data Layer

©2009 NAVTEQ™

A new tool maps Low-Access Areas -- those where residents can't easily get to a supermarket -- around the U.S.
PolicyMap

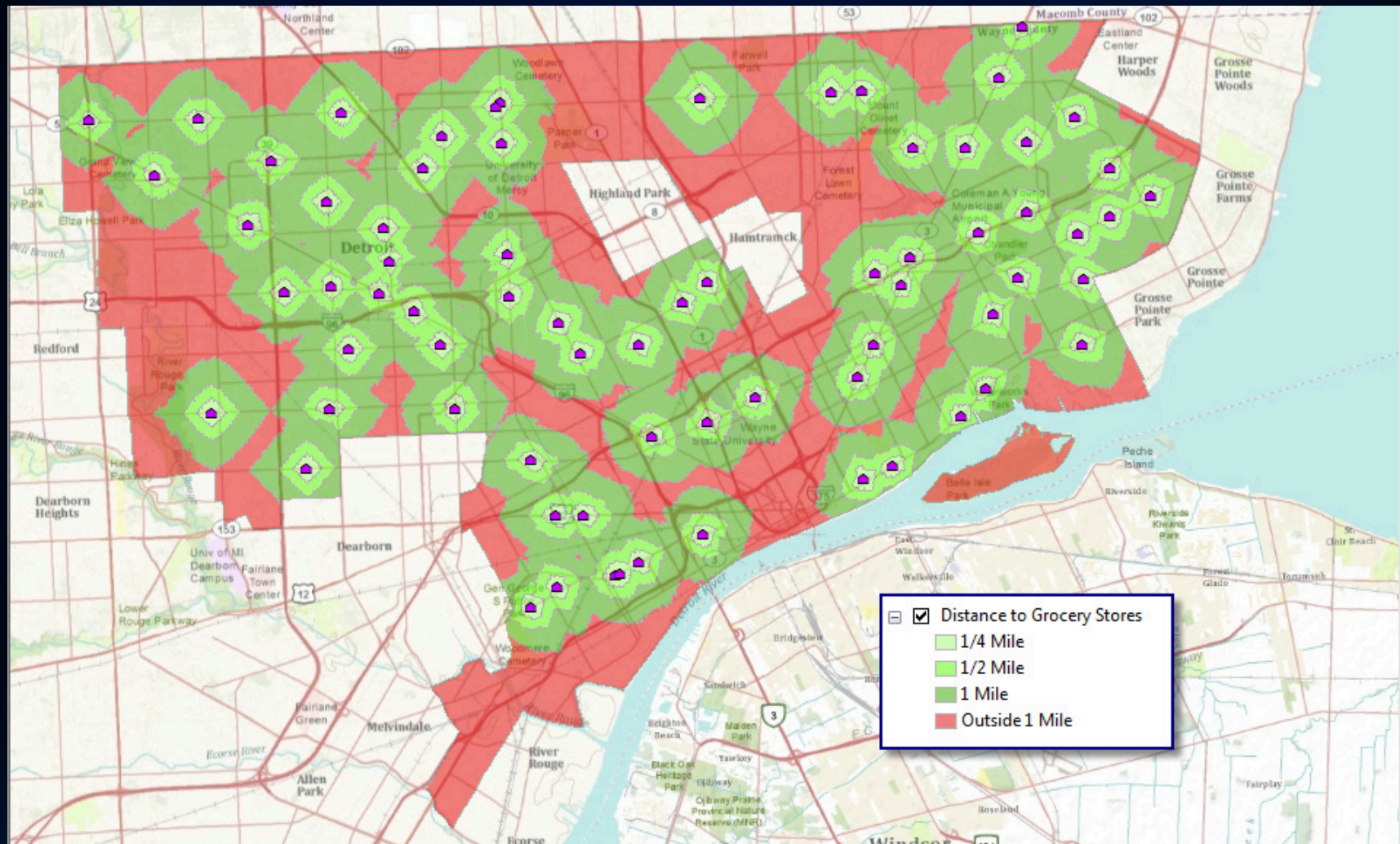
Earlier this month, in a piece for our *Feeding the Cities* series, Stephanie Paige Ogburn explained how urban "food deserts," areas without grocery stores selling healthy food and fresh produce, came to be:

Medium Scale



Detroit Food Access

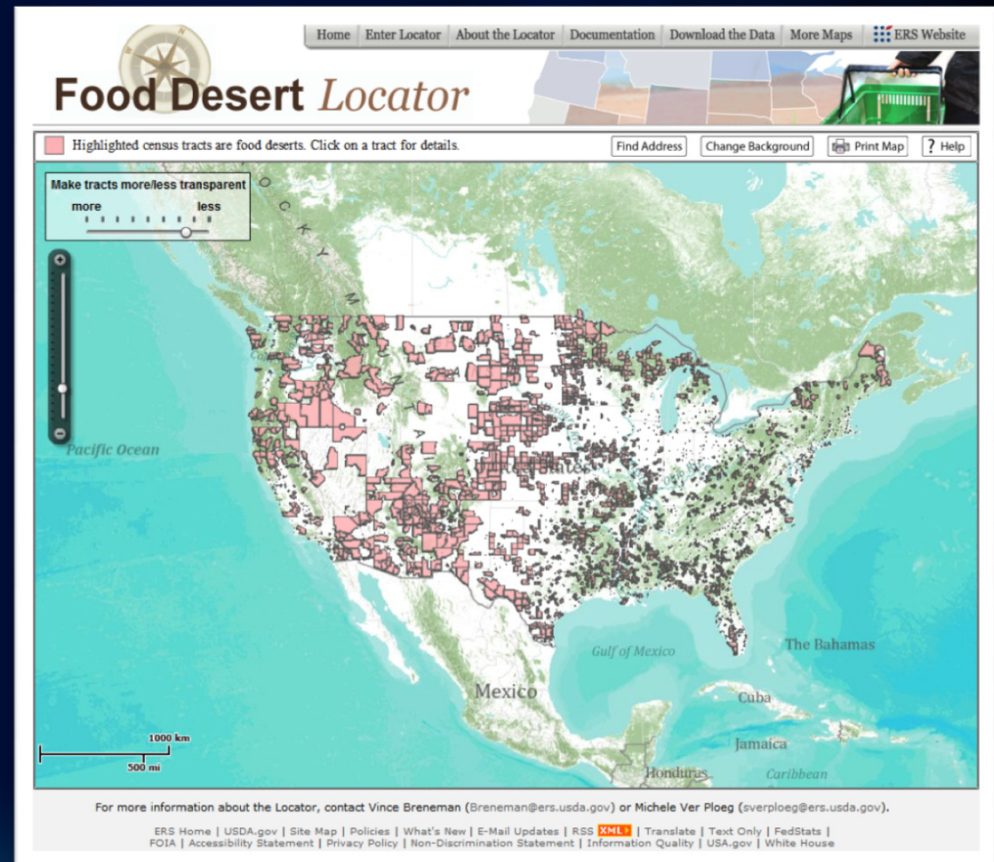
Simple distance-only example



USDA Application

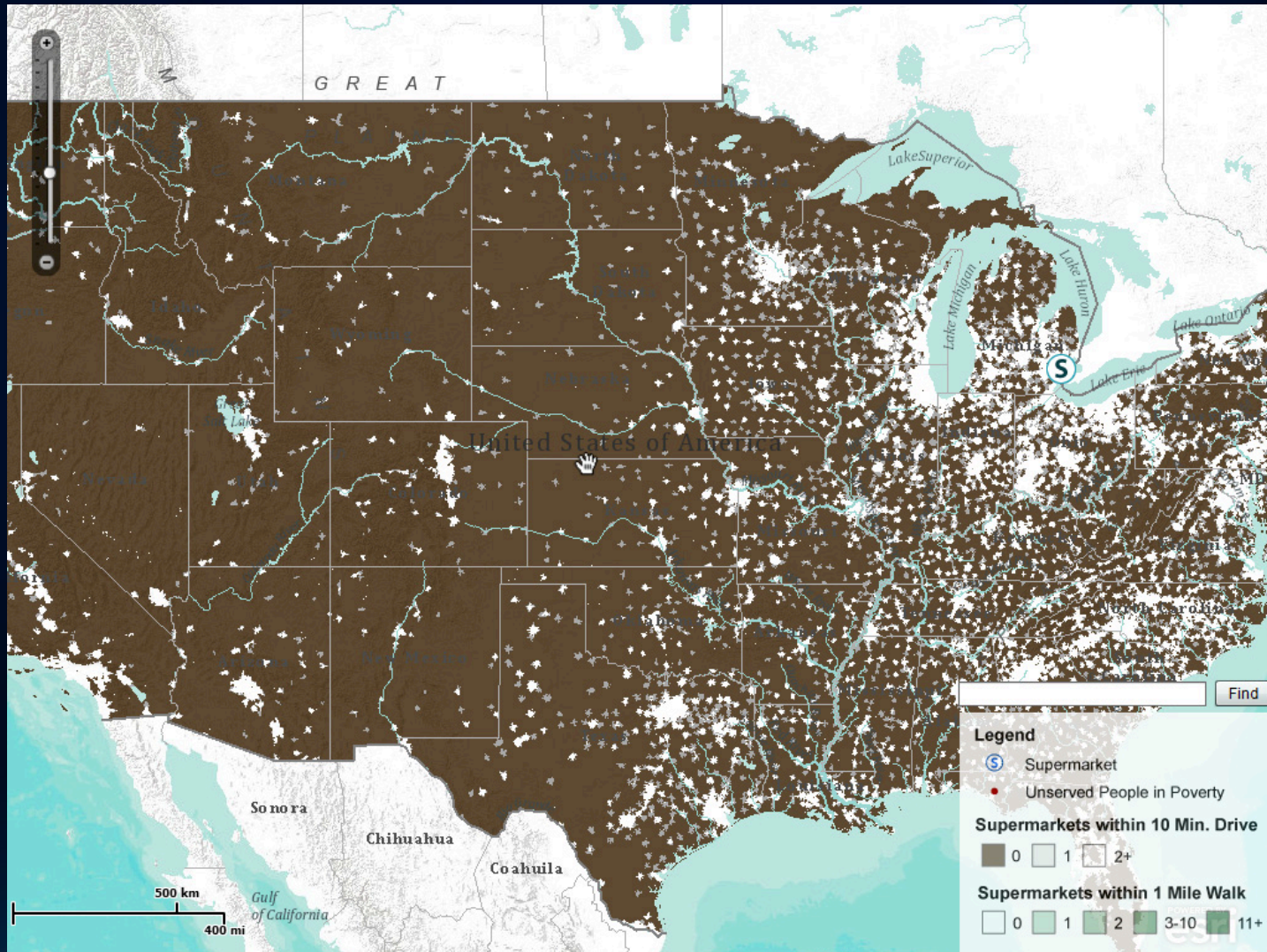
<http://www.ers.usda.gov/data/fooddesert/fooddesert.html>

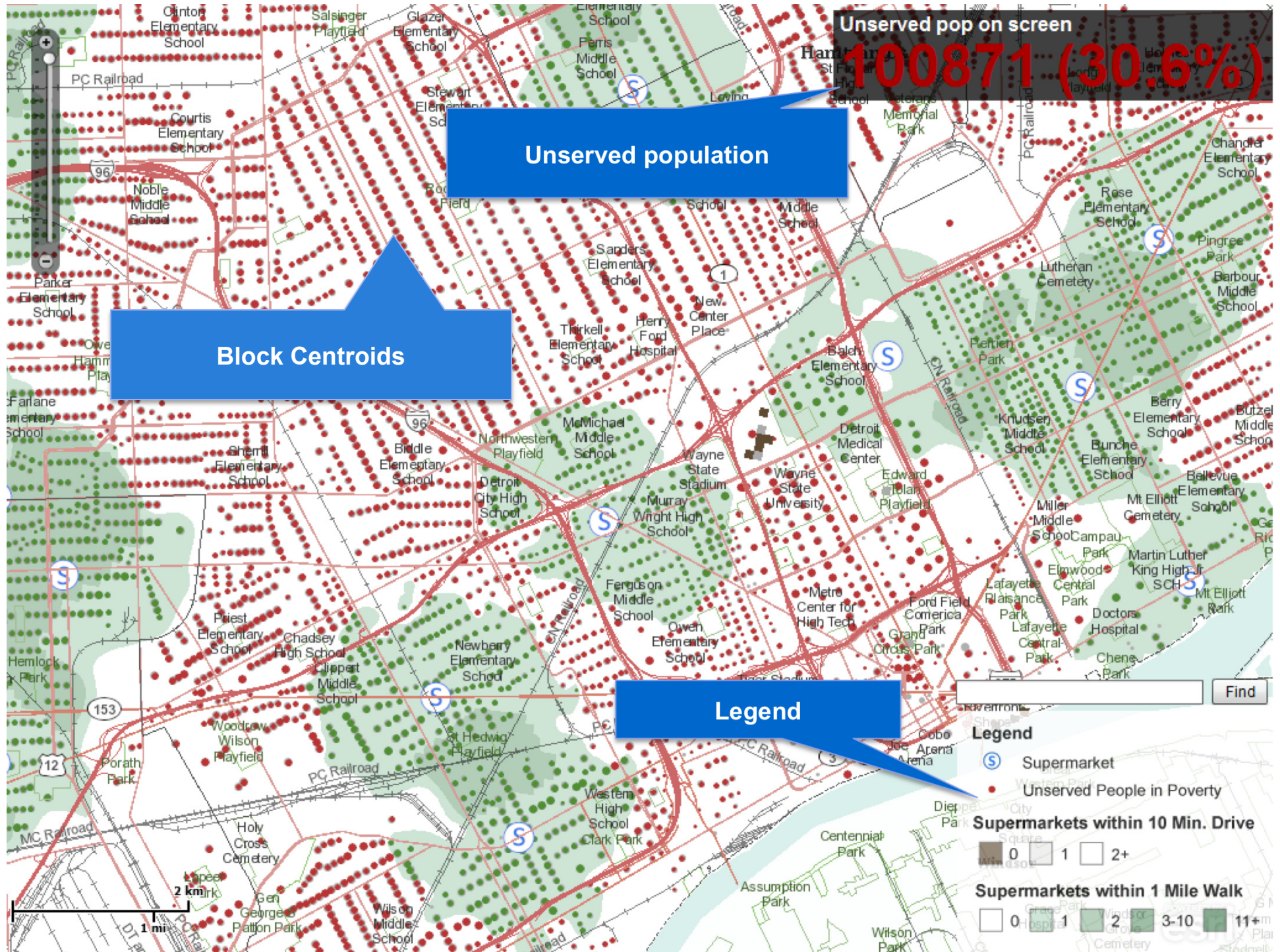
- **Food Desert Defined:**
 - *low-income census tract* where a substantial number or share of residents has *low access* to a supermarket or large grocery store:
- **National data**
 - Census Tract
- **Built on ArcGIS Server**
 - Flex API
 - Interactive web map



ESRI Food Desert Finder

<http://megacity.esri.com/fooddeserts>





Unservd pop on screen
100871 (30.6%)

Unservd population

Block Centroids

Legend

Legend

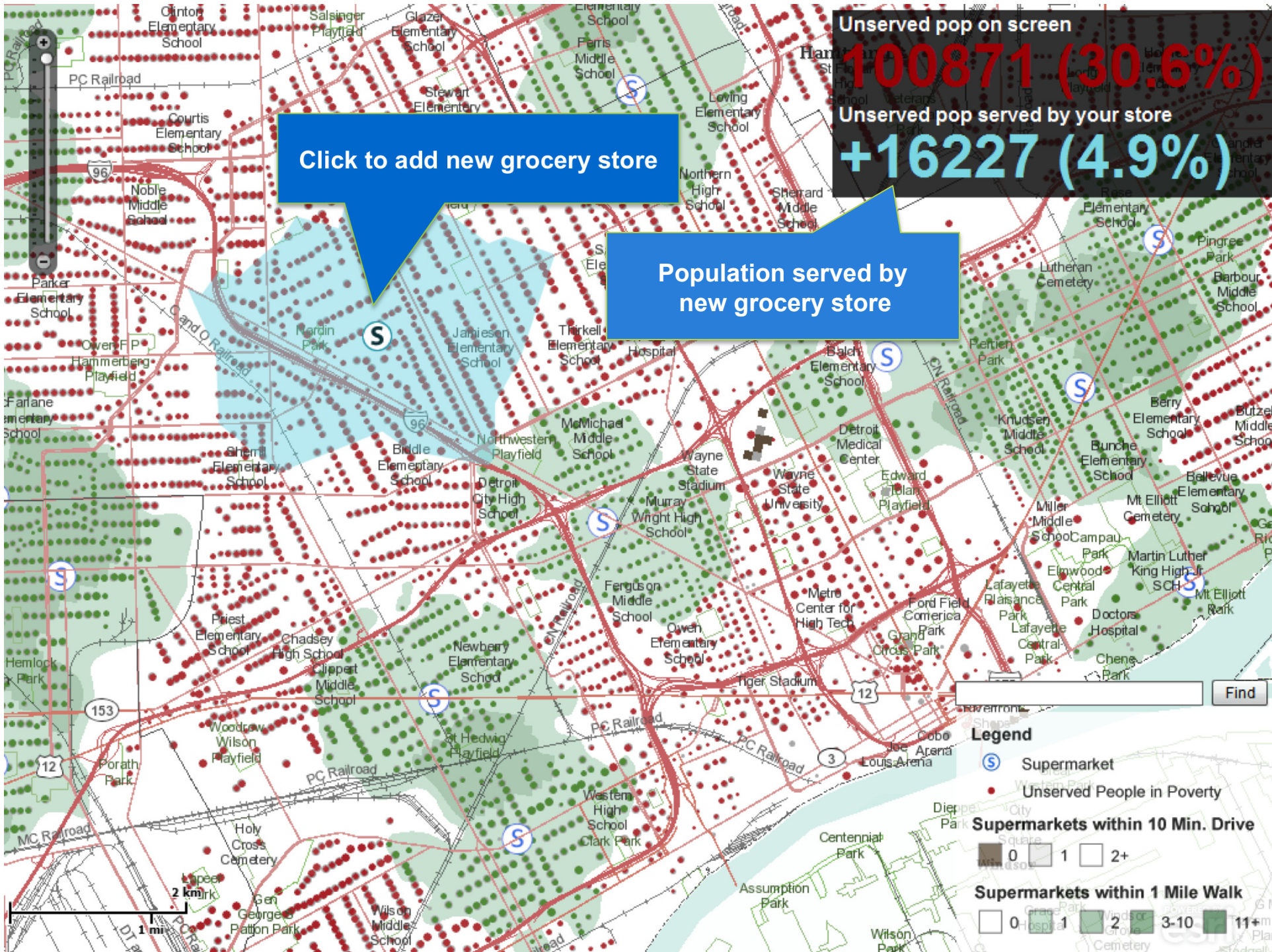
- Supermarket
- Unserved People in Poverty

Supermarkets within 10 Min. Drive

	0		1		2+
--	---	--	---	--	----

Supermarkets within 1 Mile Walk

	0		1		2		3-10		11+
--	---	--	---	--	---	--	------	--	-----



Unserved pop on screen
100871 (30.6%)
 Unserved pop served by your store
+16227 (4.9%)

Click to add new grocery store

Population served by new grocery store

Legend

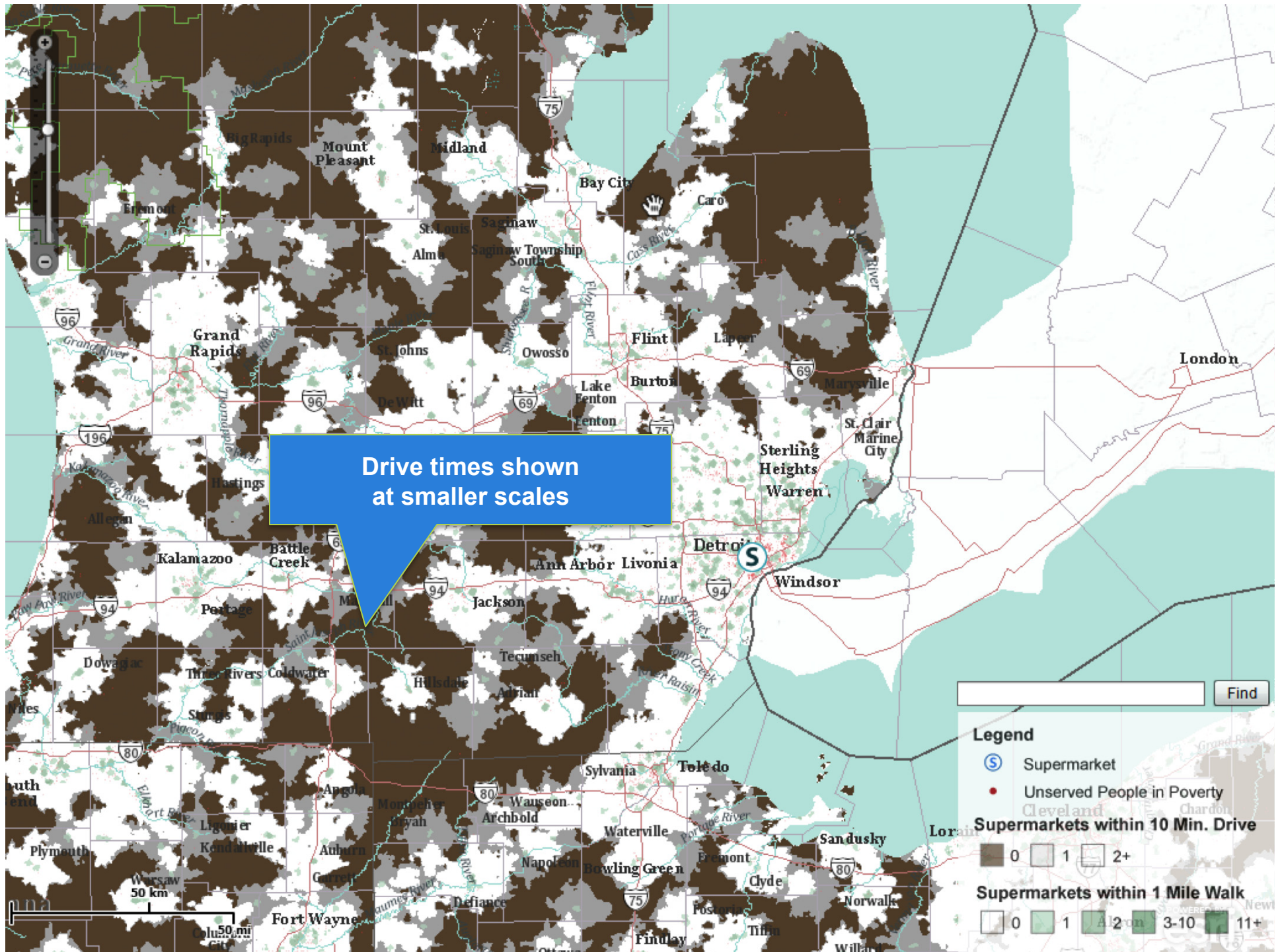
- Supermarket
- Unserved People in Poverty

Supermarkets within 10 Min. Drive

- 0
- 1
- 2+

Supermarkets within 1 Mile Walk

- 0
- 1
- 2
- 3-10
- 11+



ESRI Food Desert Finder

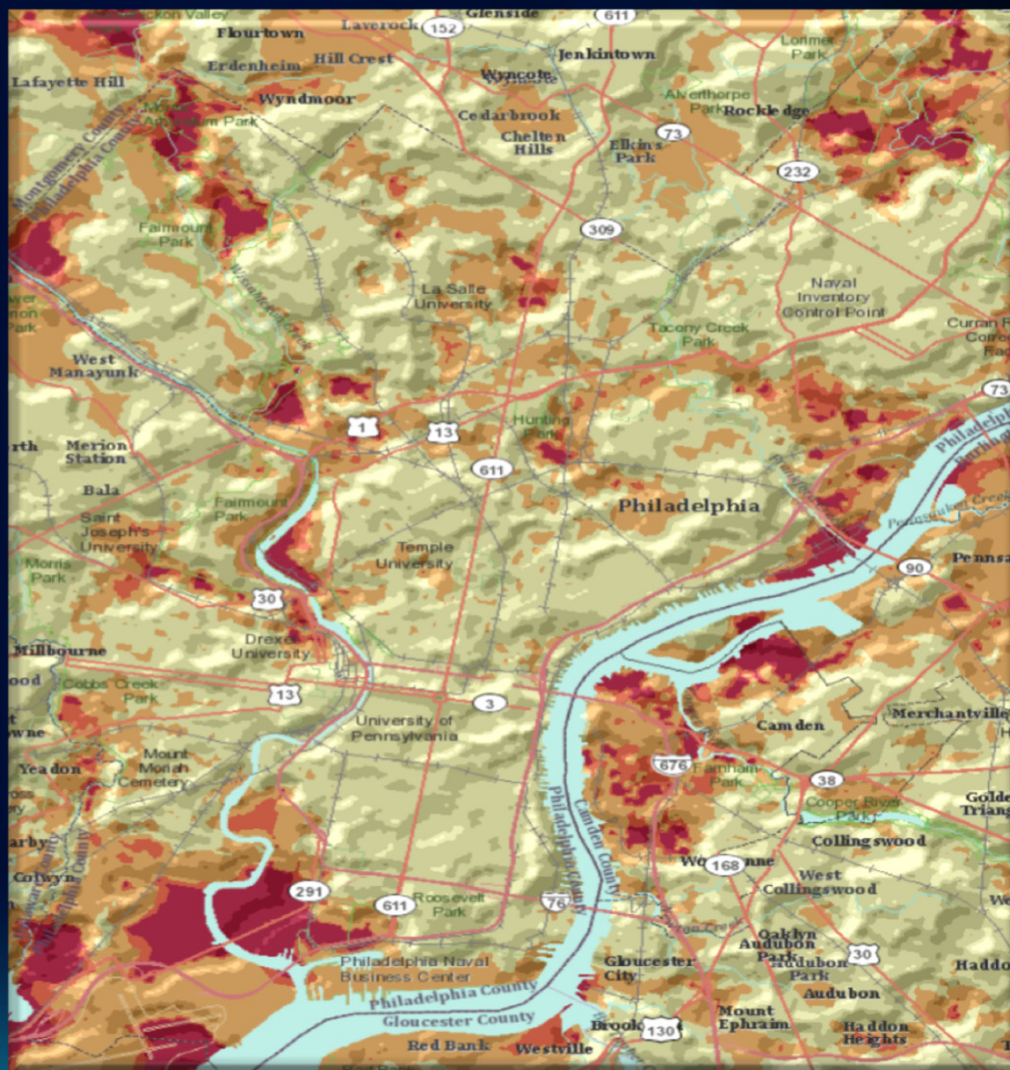
Data sources

- **Built on ArcGIS Server**
- **Data sources**
 - **Block centroids**
 - **Census population**
- **Goals**
 - **Which blocks have walkable access to a supermarket?**
 - **Visualize measurements in full view**
 - **Partial view of how people access food**

ESRI Food Desert Finder

Updates for 2011

- New data
 - Census 2010
 - socioeconomic status
 - significant differences in access
- Visualization
 - ‘hillshade’ effect



ESRI Food Desert Finder

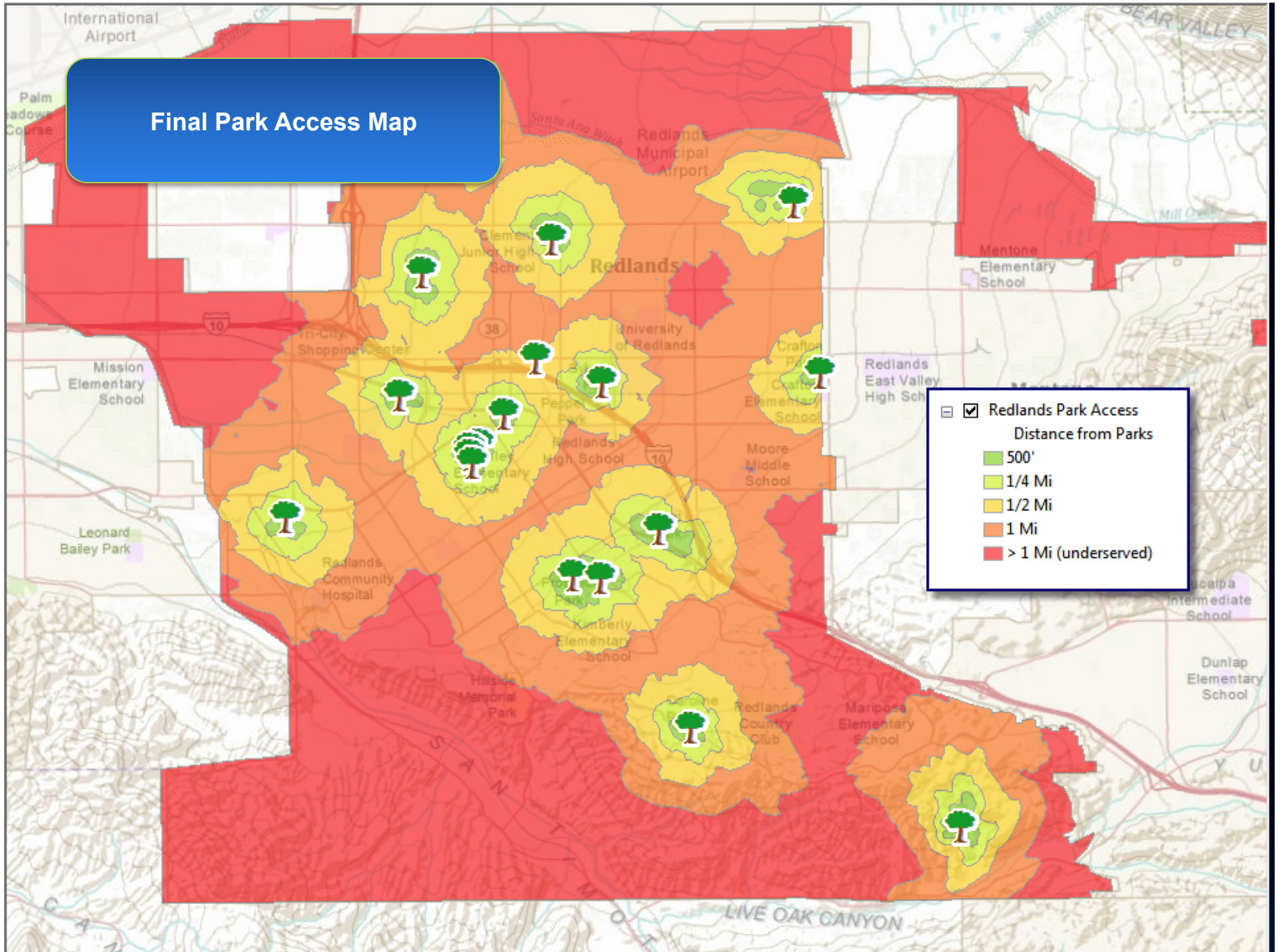
Updates for 2011

- **Create a single, relatable measure of the food environment**
- **Distance is only a part of the story**
- **Assess areas based on multiple criteria**
 - **Poverty**
 - **Car ownership**
 - **% of income spent on food at home**
 - **Crime**
 - **Rural population**
 - **Distance to and number of restaurants and farmers' markets**
 - **Distance to and number of supermarkets**
- ****Data and methods available upon request**

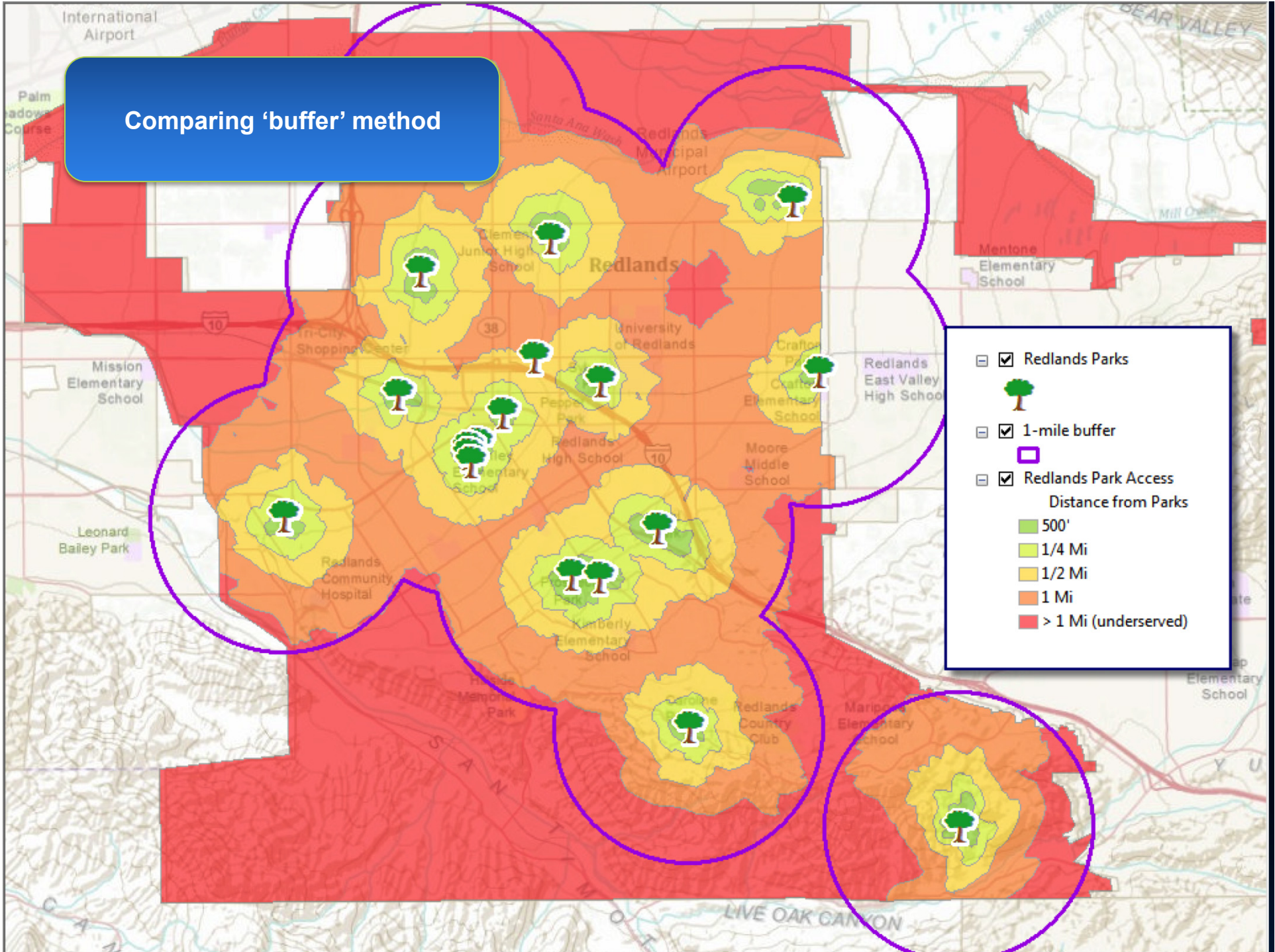
Measuring Park Access

The image features a dark blue background with a light blue grid pattern. On the right side, there is a stylized illustration of a green landscape with a road and a bridge. The title "Measuring Park Access" is centered in the upper half of the image.

Final Park Access Map



Comparing 'buffer' method



Determining new park location



Park Location Voting Application

Built on ArcGIS Server, Flex API

A New Park for Redlands

Click a park to see how popular each park is, and submit your own vote

Current Parks in Redlands

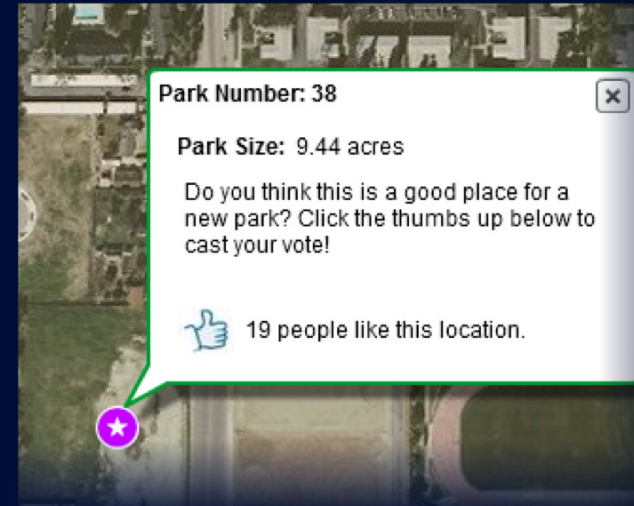
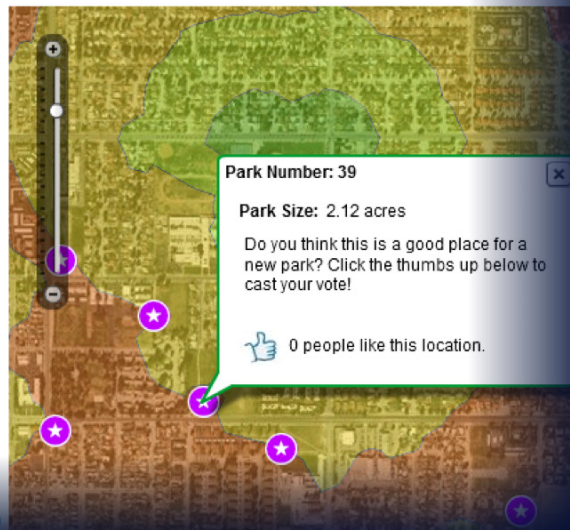
Redlands Parks



Current Park Access Map

Distance from Parks

- 500'
- 1/4 Mi
- 1/2 Mi
- 1 Mi
- > 1 Mi (underserved)



Voting Results

A New Park for Redlands



Park ID	Number of Votes Tallied
38	19
25	7
13	5
27	5

Table

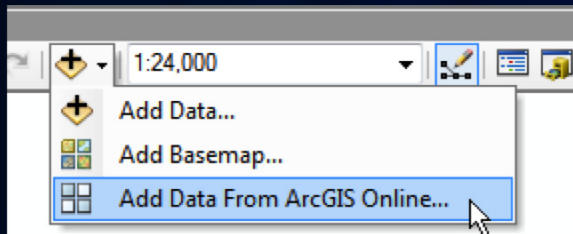


ParkAnalysisDesign.DBO.ParkVotingResults


ParkIDVoted *	AgreeWithPark	datetime
13	True	6/21/2011 12:50:06 AM
13	True	6/21/2011 12:50:07 AM
13	True	6/21/2011 12:50:08 AM
38	True	6/21/2011 12:50:13 AM
38	True	6/21/2011 12:50:14 AM

Sketching a new park

Park Design Template

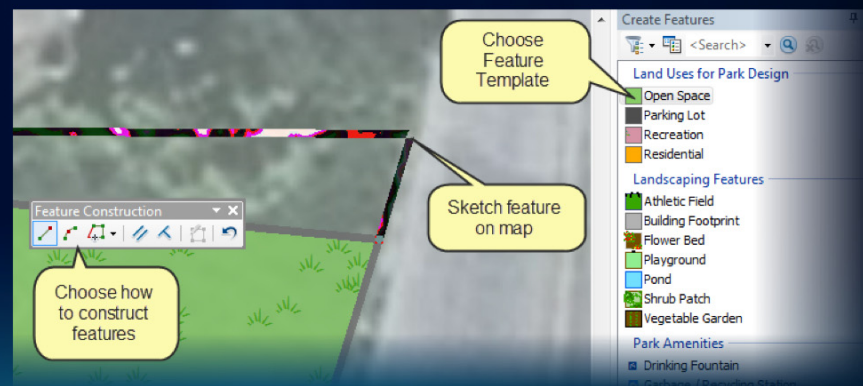


Park Design Template



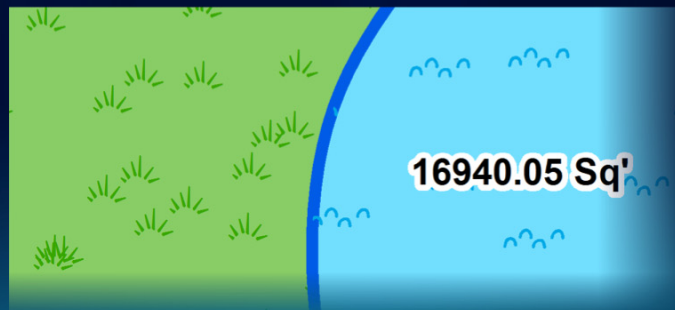
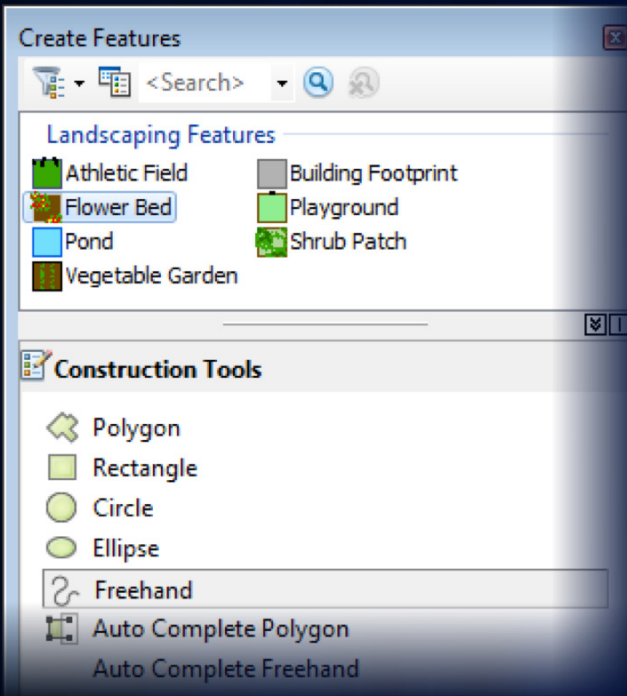
This is a schema-only layer package designed to be used in an edit session in ArcGIS 10. This layer package contains feature templates to be used in a park-design scenario.

Layer Package by [blackpoll](#) 6/6/2011 [Details](#) [Add](#)

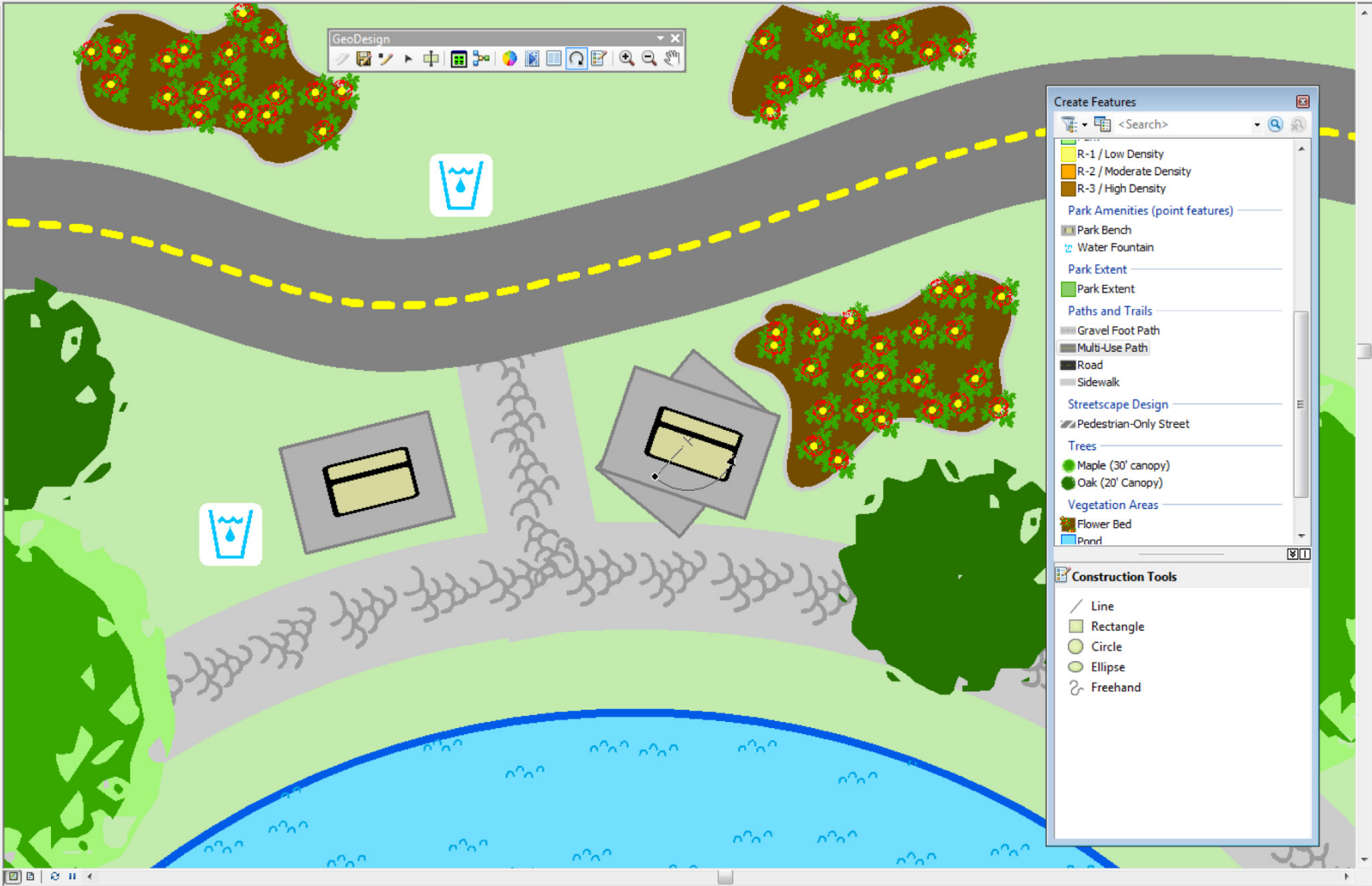


Sketching a new park

Park Design Template



GeoDesign



Create Features

<Search>

- R-1 / Low Density
- R-2 / Moderate Density
- R-3 / High Density

Park Amenities (point features)

- Park Bench
- Water Fountain

Park Extent

- Park Extent

Paths and Trails

- Gravel Foot Path
- Multi-Use Path
- Road
- Sidewalk

Streetscape Design

- Pedestrian-Only Street

Trees

- Maple (30' canopy)
- Oak (20' Canopy)

Vegetation Areas

- Flower Bed
- Pnrd


Construction Tools

- Line
- Rectangle
- Circle
- Ellipse
- Freehand

Blog Post Series – Park Analysis and Design

ArcGIS Desktop Blog - <http://blogs.esri.com/Dev/blogs/arctgisdesktop/>

[ArcGIS.com](#) [ESRI.com](#) [Sign In](#) [Join](#)

 **ArcGIS Resource Center** [Help](#) **[Blogs](#)** [Forums](#)

ArcGIS Desktop Blog

This Blog

- [Home](#)

Subscribe

- [RSS 2.0](#)
- [Atom 1.0](#)

Recent Posts

- [Sketching the design of a new park](#)
- [Voting on a new park location](#)
- [ArcGIS Desktop 10.1 Beta 1](#)
- [Patch - ArcGIS Desktop and Engine Internet Tiled Layers](#)
- [Great info if you are going to the User Conference](#)

Taas

Measuring access to parks

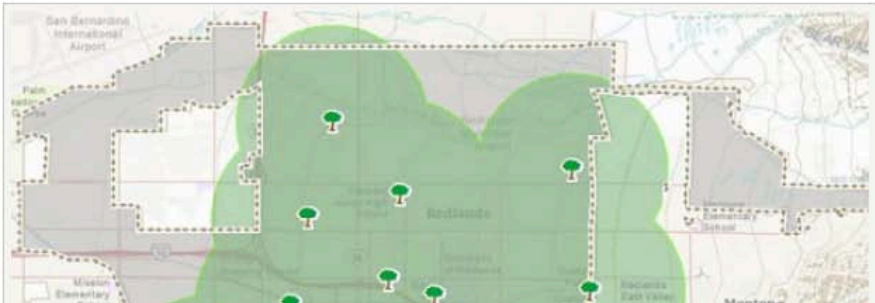
Park analysis and design - Measuring access to parks (part 1)

Have you ever wondered how far you are from a park? In this post, I'll examine the placement of parks in Redlands, California, and determine which areas are best and worst served by a park. In future posts, I'll discuss siting a new park using binary suitability analysis, web-based tools for evaluating and increasing park access, and the design of a new park using ArcMap and feature template-based editing.

Over the last year, I've been attending various urban planning conferences and have discussed with several urban planners the need to design healthier communities, and I have heard this notion echoing throughout the planning community.

One concern is to figure out how well areas are served by parks. In my analysis, I want to determine which areas are within one mile of a park and visualize the results in a way that is easy to understand. I chose one mile, assuming most people can visualize how long it would take them to walk a mile, but this analysis could certainly be easily altered to measure any distance and present the results in a similar manner.

To do this, I could use a simple one-mile buffer around the parks, as the first map shows. However, a map created that way does not consider modes of travel. I want to measure pedestrian access to parks, so the best route is to travel along a road, preferably on the sidewalk.



ESRI Rideshare Application

Managing commuter information

Esri Rideshare

Commuting Map

Add Your Route

Other Redlands Data

About

Sign Up

Topo Map

Streets

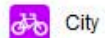
Imagery

Welcome!

Welcome to the Esri Rideshare application. Here you will find data from Esri, The City of Redlands, and volunteered data from Esri Commuters of all types. Explore the data, add your own, and keep in touch to see how the data is analysed and used in the future at Esri and The City of Redlands.

ESRI Bicycle Infrastructure

Bicycle Racks



Entrance Points to ESRI Campus

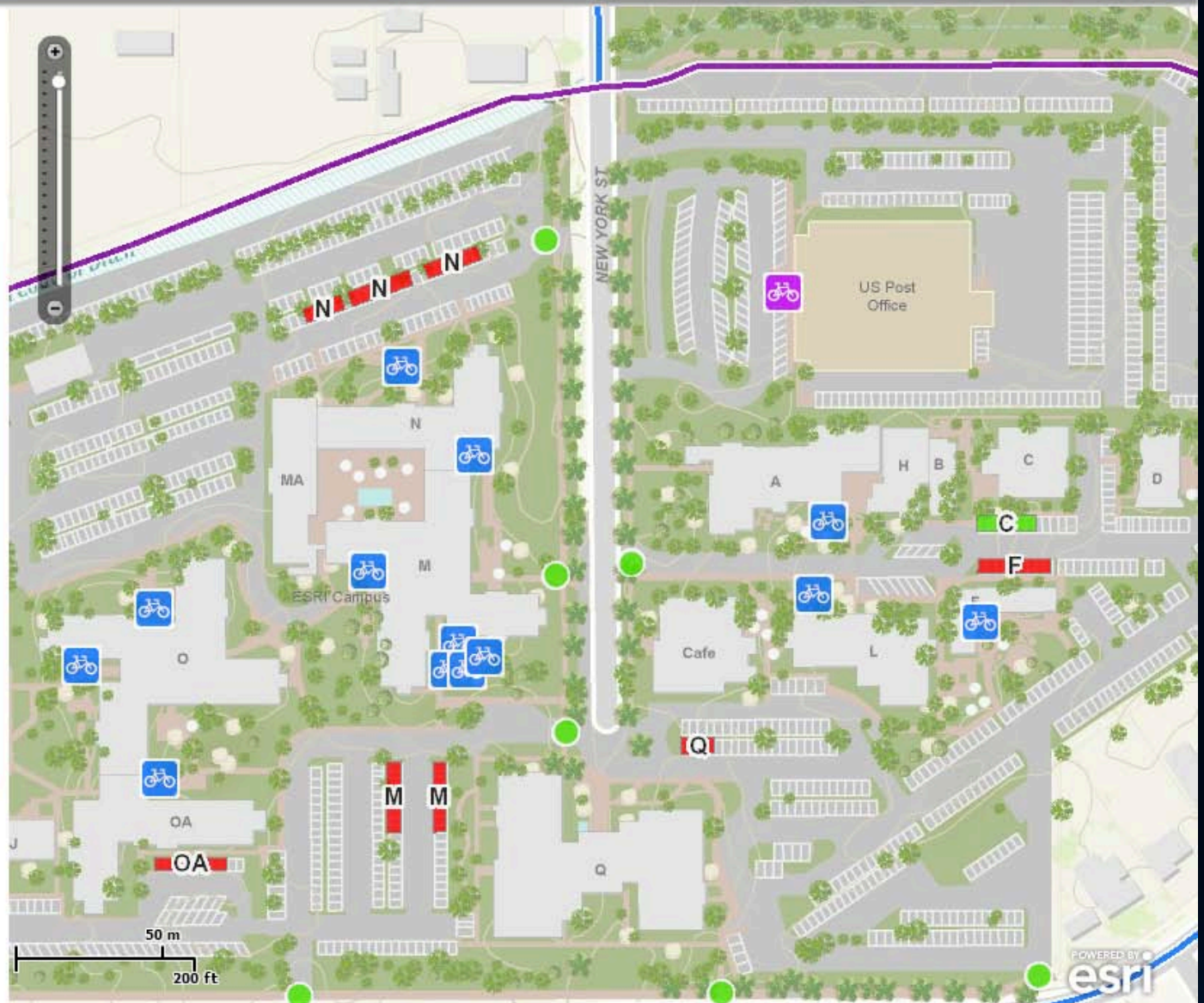


Redlands Proposed Bicycle Lanes

From City of Redlands

- Class I: Multi-use Bike Path
- Class II: Bike Lane
- Class II or Class III
- Class III: Signed Bike Route

Show Commuting Map
Map Transparency



Esri Rideshare

- Commuting Map
- Add Your Route
- Other Redlands Data
- About
- Sign Up

- Topo Map
- Streets
- Imagery

Add Your Route

Use the templates below to trace your route on the map. Do you have a favourite ride? Do you think there should be more infrastructure in the City? Add your ideas!

Commuting Routes

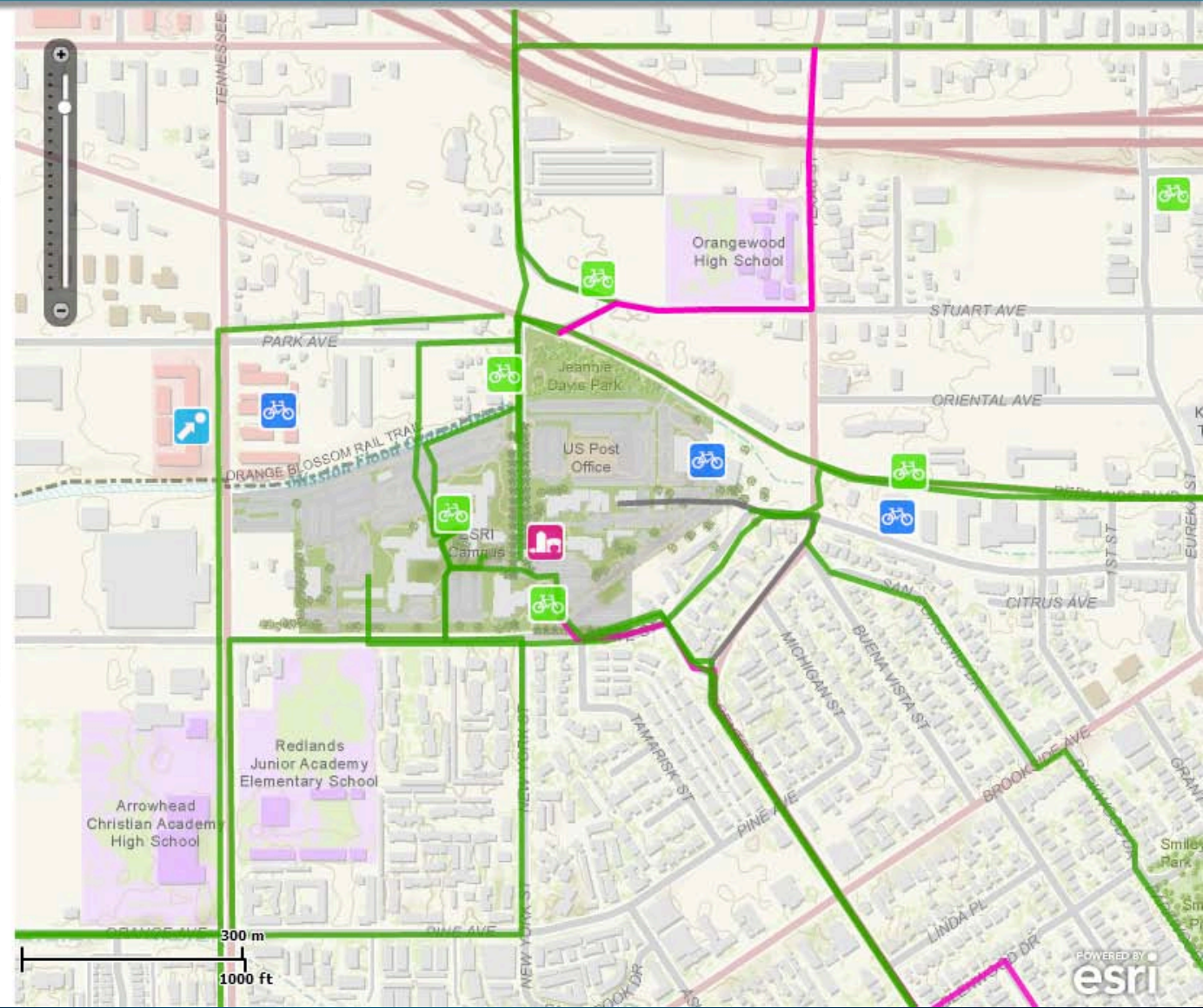
- Cycling
- Walking
- Driving
- Other
- Recommended Route

Commuting Amenities

- Bike Rack (existing)
- Bike Rack (proposed)
- Grocery Store
- Point of Interest



Show Commuting Map
Map Transparency



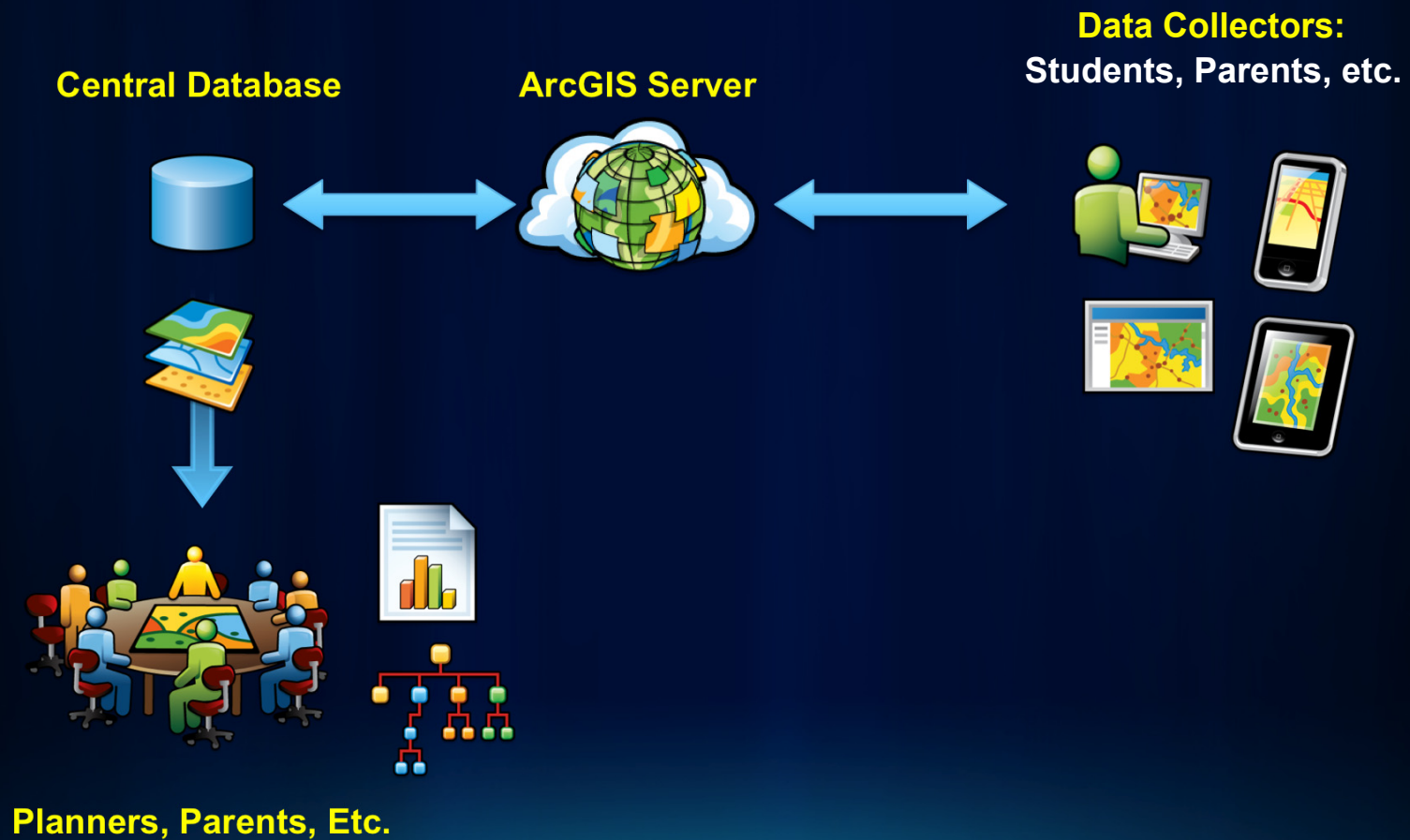
Safe Routes to School Planning

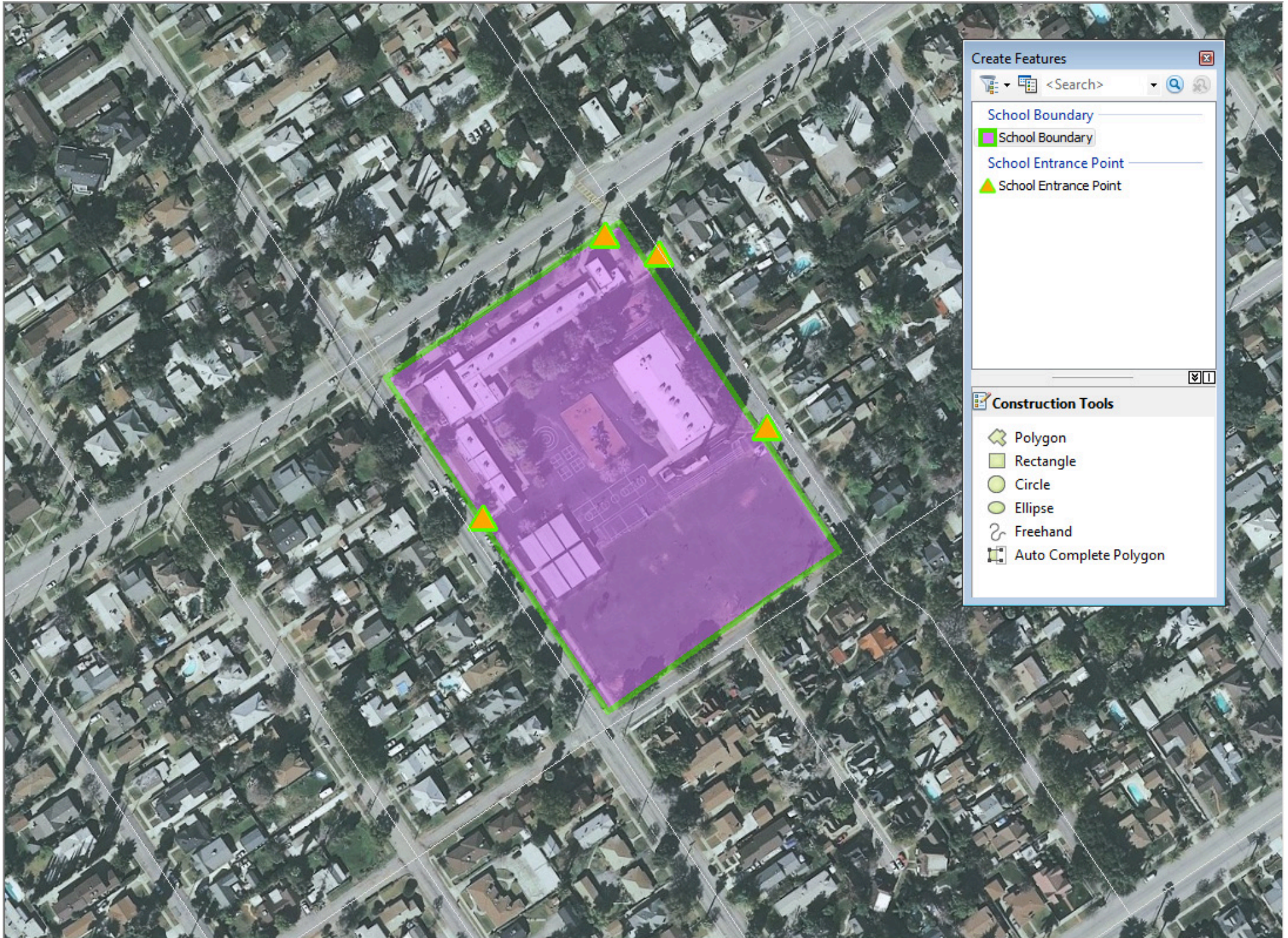
Data Collection, Site Design, Visualization



Collecting Data

Park Locations, Grocery Stores, Walkable Sidewalks, etc...





Create Features

<Search>

School Boundary

School Boundary

School Entrance Point

School Entrance Point

Construction Tools

Polygon

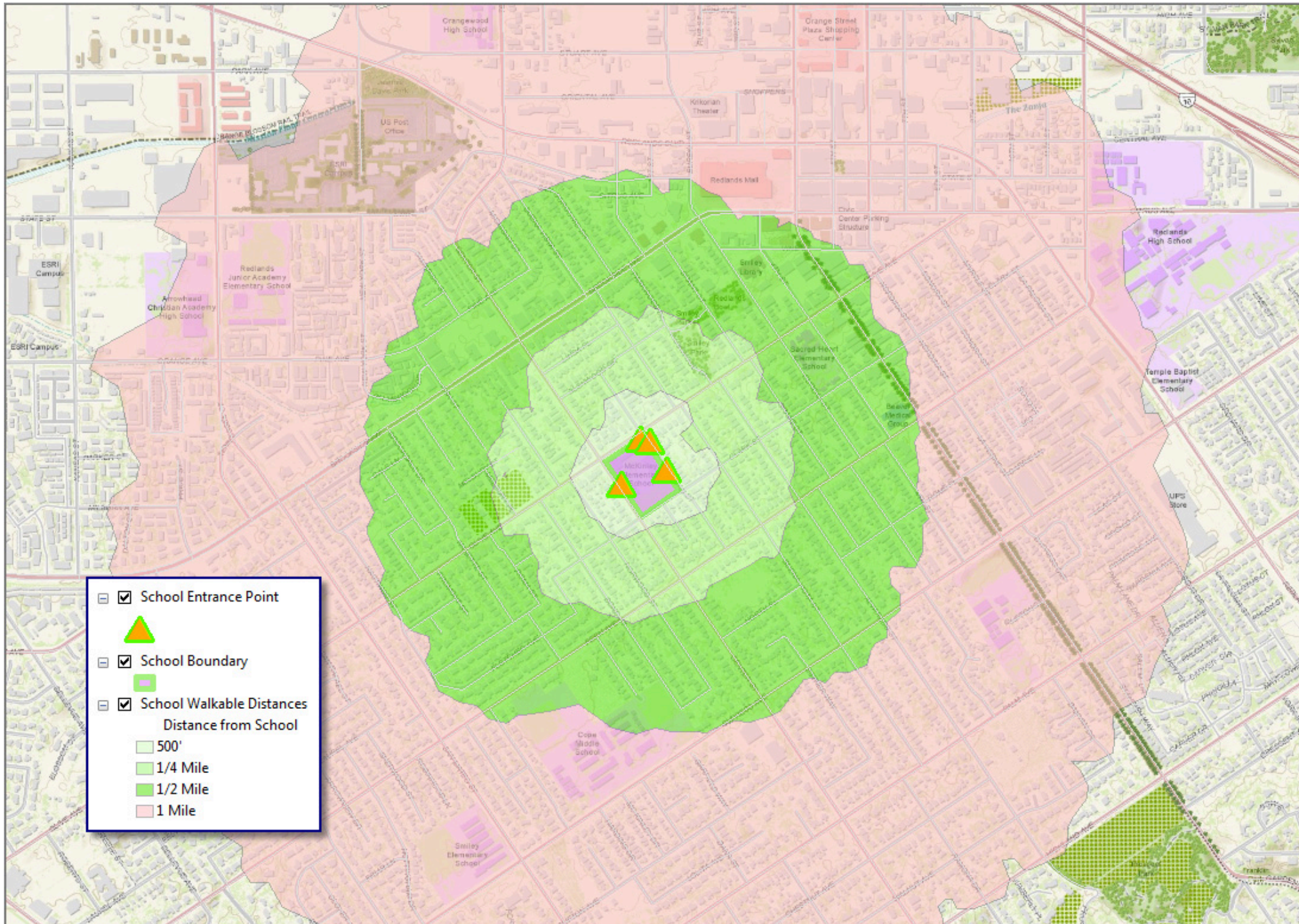
Rectangle

Circle

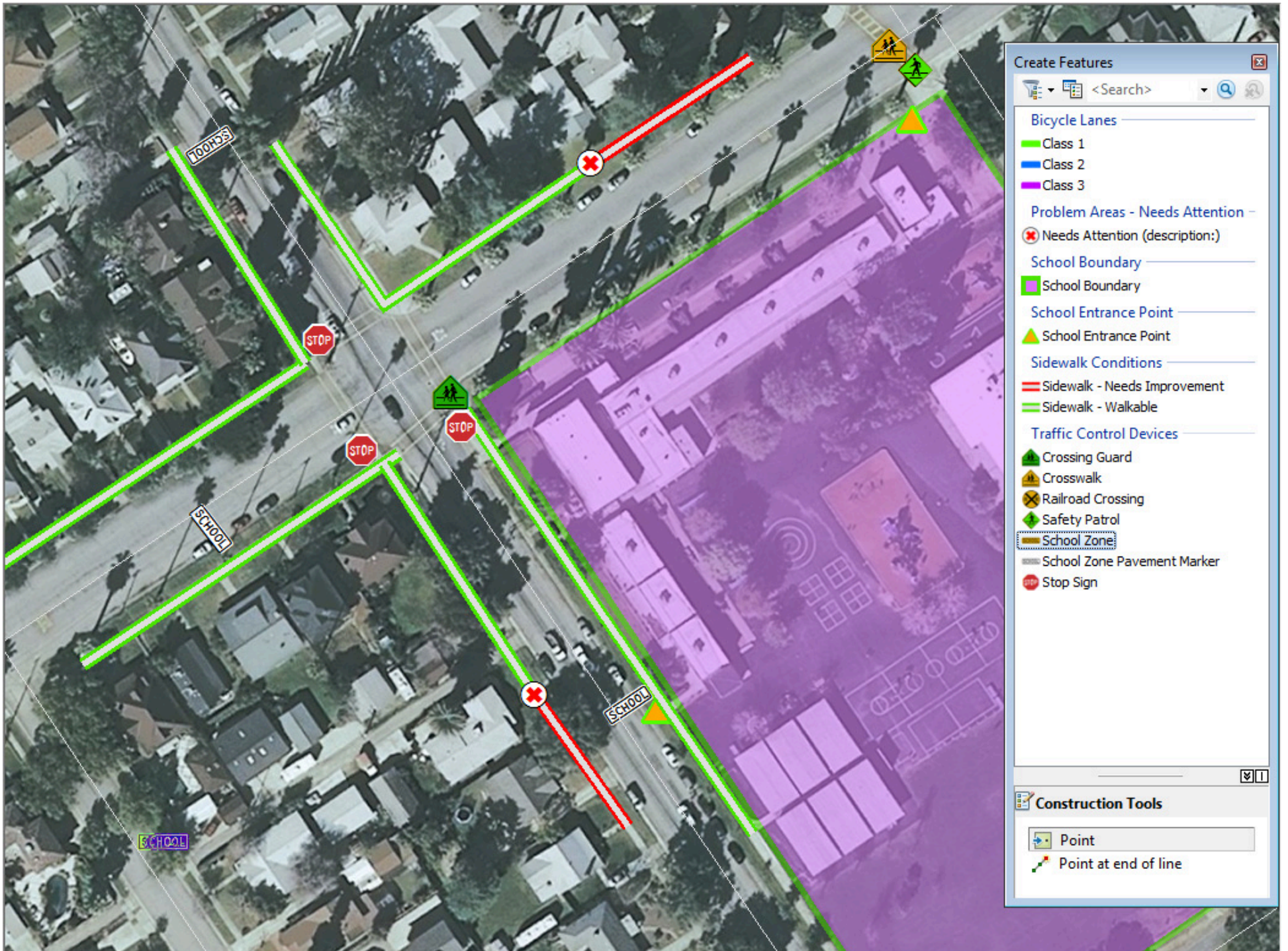
Ellipse

Freehand

Auto Complete Polygon



- School Entrance Point
- School Boundary
- School Walkable Distances
 - Distance from School
 - 500'
 - 1/4 Mile
 - 1/2 Mile
 - 1 Mile



Create Features

<Search>

Bicycle Lanes

- Class 1
- Class 2
- Class 3

Problem Areas - Needs Attention

- Needs Attention (description:)

School Boundary

- School Boundary

School Entrance Point

- School Entrance Point

Sidewalk Conditions

- Sidewalk - Needs Improvement
- Sidewalk - Walkable

Traffic Control Devices

- Crossing Guard
- Crosswalk
- Railroad Crossing
- Safety Patrol
- School Zone
- School Zone Pavement Marker
- Stop Sign

Construction Tools

- Point
- Point at end of line

Safe Routes to School Map

McKinleyville Elementary School

Legend

- Needs Attention
- Sidewalk - Needs Improvement
- Sidewalk - Walkable

Traffic Control Devices

Type

- 15mph Speed Zone
- Crossing Guard
- Crosswalk
- Railroad Crossing
- Safety Patrol
- School Zone
- School Zone Pavement Marker
- Stop Sign

Bicycle Lanes

Class of Bike Lane

- Class 1
- Class 2
- Class 3

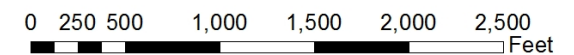
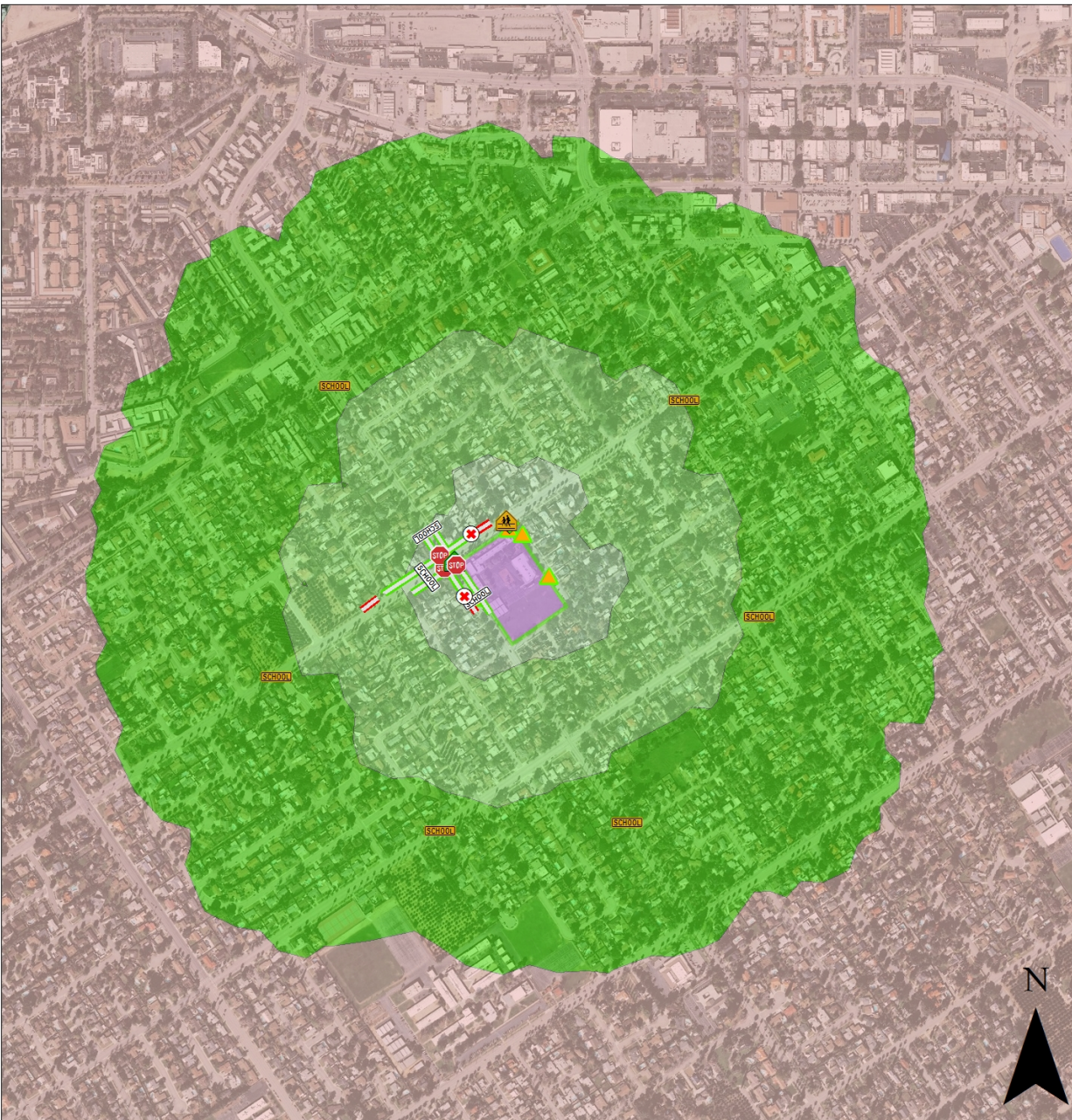
- School Entrance Point

- School Boundary

School Walkable Distances

Distance from School

- 500'
- 1/4 Mile
- 1/2 Mile
- 1 Mile





Thank you!

Matthew Baker

matt_baker@esri.com

